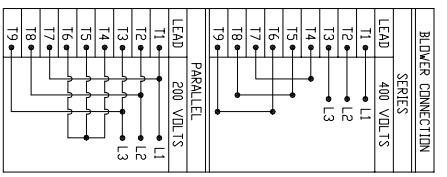


SPECIFICATIONS:

1. MOTOR INFORMATION  
 MOTOR TYPE: VARIABLE SPEED AC  
 FRAME SIZE: RDL1310Y  
 RATING: 238 KW  
 VOLTAGE: 400  
 ENCLOSURE: TOTALLY ENCLOSED IP54  
 MOUNTING: FLANGE (350mm BOLT CIRCLE)  
 COOLING: BLOWER COOLED IC416  
 DRIVE METHOD: COUPLED OR BELTED  
 ACCESSORIES: ENCODER & BRAKE

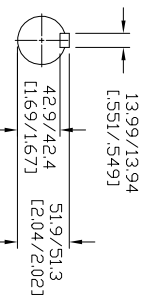
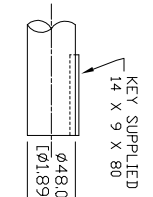
2. CONTINUOUS STALL TORQUE: 155 Nm  
 MAX AT 155°C WINDING TEMPERATURE, IN A 40°C  
 AMBIENT  
 3. OPERATING SPEED: 1500 BASE SPEED / 3000 RPM MAX.  
 4. 1024 SINUSOID/REV ENCODER, WITH  
 MULTI-TURN ABSOLUTE POSITION DATA  
 5. FOR ADDITIONAL SPECIFICATIONS  
 SEE 10000000328  
 6. SHAFT HEIGHT WILL NOT BE EXCEEDED  
 SHIMS UP TO 0.5 MM IN THICKNESS USUALLY  
 REQUIRED FOR COUPLED OR GEARED MACHINES.  
 7. SHAFT EXTENSIONS ARE ACCORDING TO DIN 748. TOLERANCES ARE BASED ON  
 THE ISA FITTING SYSTEM USING K6 FOR DIAMETERS UP TO 50MM AND m6  
 FOR DIAMETERS ABOVE.  
 8. MAX SHAFT TIR .06 (0.002)  
 9. MOTOR WEIGHT 218 KG (481 LBS) (MAY VARY 15%)  
 10. BRAKE: 400VAC 20 Nm MAX. HOLDING TORQUE,  
 BRAKE RELEASES WHEN VOLTAGE APPLIED



LEAD	SERIES	PIN-OUT	ENCODER CONNECTOR
T1	L1	A	SIN +
T2	L2	B	SIN -
T3	L3	C	CDS +
T4	L3	D	CDS -
T5	L3	E	DATA +
T6	L3	F	DATA -
T7	L3	G-M	-
T8	L3	N	+9 VDC
T9	L3	P	COM
		R	TS +
		S	TS -
		T-V	-

MOTOR CONNECTION	TERMINAL BOX
LEAD	U1
	V1
	W1
	L3
	GREEN
	GROUND

BRAKE CONNECTION	460 V 1 PHASE
LEAD	BR
	BI
	L2



REFERENCES

VERSION/  
 CHANGE  
 NUMBER

TOLERANCES UNLESS  
 OTHERWISE SPECIFIED  
 DO NOT SCALE DRAWING  
 DIMENSIONS ARE IN  
 MILLIMETERS UNLESS  
 OTHERWISE REFERENCED  
 DIMENSIONS ARE  
 REFERENCED IN  
 INCHES REFERENCED IN  
 UNTOLERANCED  
 DIMENSIONS ARE  
 REFERENCED IN  
 ANGLES PROJECTED

DESCRIPTION

HPK-E1310C-MB44AA,ESM

CAD DOCUMENT

NOTE: ALL DRAWING MODIFICATIONS REQUIRE CUSTOMER APPROVAL

SUPPLIER PART NUMBER: L13W5271

Rockwell  
 Automation

Allen-Bradley  
 ABB

DR.	AMB	DATE	09-19-06	SHEET	1	OF	1
DXF FILE AVAILABLE				DWG SIZE	10000000348		