

1. MOTOR INFORMATION  
 MOTOR TYPE: VARIABLE SPEED AC  
 FRAME SIZE: RDL1613Y  
 RATING: 7.37 KW  
 VOLTAGE: 400

ENCLOSURE: TOTALLY ENCLOSED IP54  
 MOUNTING: FLANGE (350mm BOLT CIRCLE)  
 COOLING: BLOWER COOLED IC416  
 DRIVE METHOD: COUPLED OR BELTED  
 ACCESSORIES: ENCODER & BRAKE

2. CONTINUOUS STALL TORQUE: 237 Nm  
 MAX AT 155°C WINDING TEMPERATURE, IN A 40°C AMBIENT

3. OPERATING SPEED: 3000 BASE SPEED / 5000 RPM MAX.

4. 1024 SINUSOID/REV ENCODER, WITH MULTI-TURN ABSOLUTE POSITION DATA

5. FOR ADDITIONAL SPECIFICATIONS SEE 10000000384

6. SHAFT HEIGHT WILL NOT BE EXCEEDED SHIMS UP TO 0.5 MM IN THICKNESS USUALLY REQUIRED FOR COUPLED OR GEARED MACHINES.

7. SHAFT EXTENSIONS ARE ACCORDING TO DIN 748, TOLERANCES ARE BASED ON THE ISA FITTING SYSTEM USING K6 FOR DIAMETERS UP TO 50MM AND m6 FOR DIAMETERS ABOVE.

8. MAX SHAFT TIR .06 (0.002)

9. MOTOR WEIGHT 305 KG (672 LBS) (MAY VARY 15%)

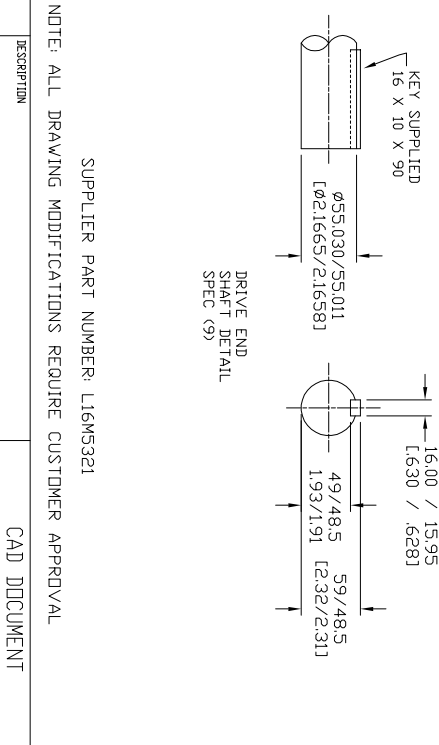
10. BRAKE: 400VAC 20 Nm MAX. HOLDING TORQUE, BRAKE RELEASES WHEN VOLTAGE APPLIED

BLOWER CONNECTION	
SERIES	400 VOLTS
LEAD	400 VOLTS
T1	L1
T2	L2
T3	L3
T4	L3
T5	
T6	
T7	
T8	
T9	

PIN-OUT ENCODER CONNECTOR	
PIN	FUNCTION
A	SIN +
B	SIN -
C	CDS +
D	CDS -
E	DATA +
F	DATA -
G-M	-
N	+9 VDC
P	COM
R	TS +
S	TS -
T-V	-

MOTOR CONNECTION	
LEAD	TERMINAL BOX SOURCE
U1	L1
U2	L2
W1	L3
GREEN	GROUND

BRAKE CONNECTION	
LEAD	460 V 1 PHASE SOURCE
B1	L1
B2	L2



NOTE: ALL DRAWING MODIFICATIONS REQUIRE CUSTOMER APPROVAL.

SUPPLIER PART NUMBER: L16MS321

REFERENCES

VERSION/CHANGE NUMBER	TOLERANCES UNLESS OTHERWISE SPECIFIED
	DO NOT SCALE DRAWING DIMENSIONS ARE IN MILLIMETERS WITH INCH DIMENSIONS UNLESS OTHERWISE SPECIFIED
	ANGLE PROJECTION

HPK-E1613E-MG44AA,ESM

CAD DOCUMENT



Allen-Bradley

DR.	AMB	DATE	09-19-06	SHEET	1	OF	1
DXF FILE AVAILABLE				DWG. SIZE	10000000404		