

## Inserting gates into the CFC chart

After opening a new CFC chart, the blank CFC chart and a small window on the right hand side is displayed. This small window contains a catalogue of the available CFC elements. With a double click on the icon "Other blocks", the window is expanded to show a list of the items (see picture 3). The same effect can be achieved by clicking the appropriate icon in the task bar.

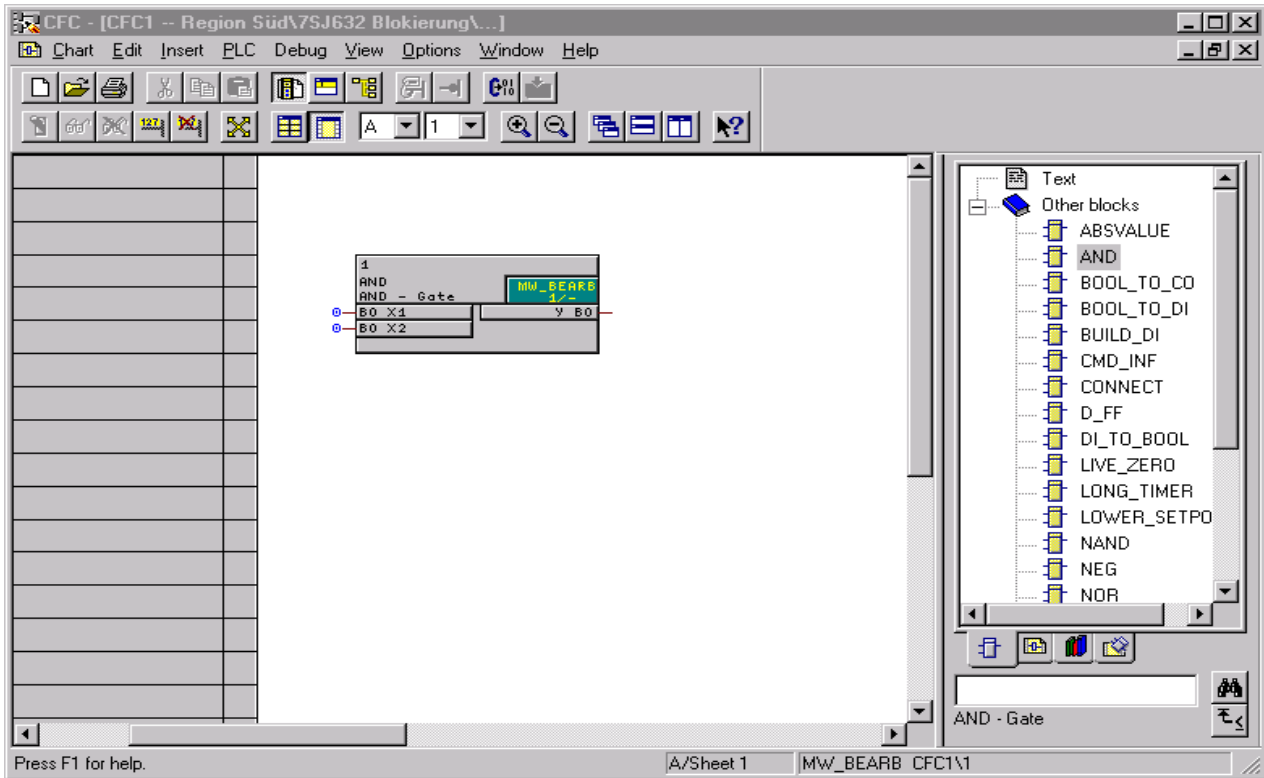
To insert a gate in the worksheet, the appropriate gate must be selected from the catalogue and inserted by "drag & drop" ( see picture 1).

The zoom function (magnifying glass) allows zooming in or out of the worksheet. A CFC chart contains 6 worksheets (see picture 2).

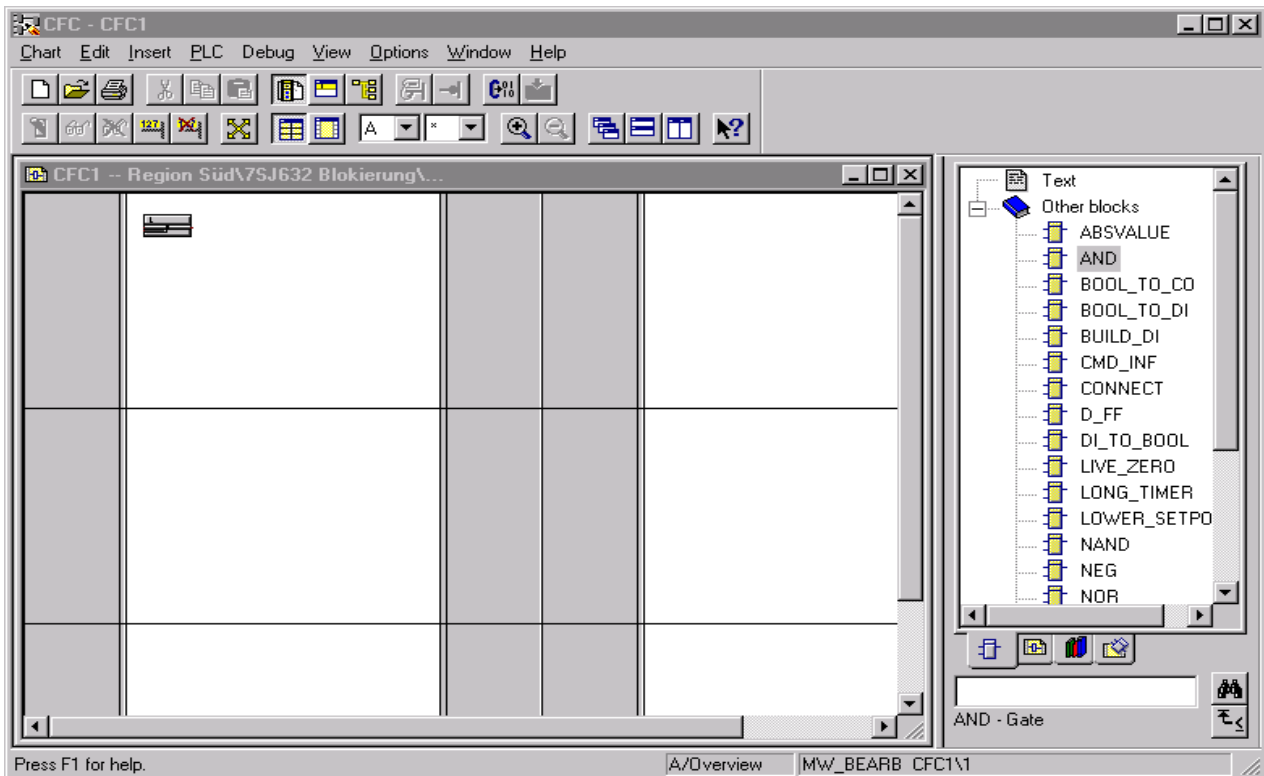
At the left side and the right side of each worksheet there is a column in which the input and output connections of the chart are shown. The connection of one gate with another is also possible. Connections from one to another worksheet in the same CFC chart is also possible.

By clicking inside a particular worksheet with the right mouse button, and choosing the item "Overview" in the "pop-up" menu, all six worksheets will be shown. If all six worksheets are already displayed, clicking the right mouse button will open a "pop-up" menu with the item "Display this sheet". Thereby it is possible to select any of the six worksheets for individual viewing. **Alternatively:** The individual CFC worksheets can be selected in the tool bar. Every CFC chart contains of six worksheets, because one worksheet might be too small to insert a large number of gates.

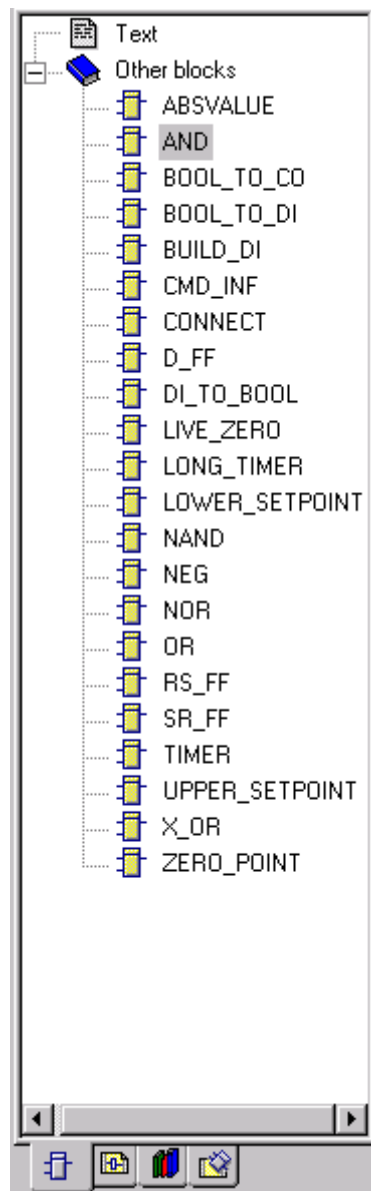
Additional information about every gate is available if you click on the gate, either in the catalogue or in the worksheet, and press the F1 (Help) button.



Picture 1: worksheet after inserting an AND gate , window on the right contains the CFC gates catalogue



Picture 2: in each CFC chart there are six worksheets



Picture 3: the catalogue of the CFC gates