

# Accessories for Communication

Product description	Variants	Order No.	Price in EUR
<b>Fiber-optical duplex outdoor cables</b>		<b>6 X V 8 1 0 0 - 0 B D</b> □ 1 - □ □ A □	
Fibre-optic duplex data line outdoor			
2 Break-out elements	<u>Connector</u>		
Fiber type glass 62.5/125um	without	0	
Halogen-free and flame-retardend	One side with FSMA connector prefabricated	1	
Nonmetallic rodent protection	Both sides with FSMA connector prefabricated	2	
External dimension Ø=8.3 mm black	Both sides with ST connector prefabricated	4	
Internal dimension Ø=1.8mm orange	With FSMA and ST connector prefabricated	5	
For indoor an outdoor use (base material AT-VHHB 2G62,5/125)			
	<u>100 meter lengths</u>		
	Length 0 m +		0
	Length 100 m +		1
	Length 200 m +		2
	Length 300 m +		3
	Length 400 m +		4
	Length 500 m +		5
	Length 600 m +		6
	Length 700 m +		7
	Length 800 m +		8
	Length 900 m +		9 <sup>1)</sup>
	<u>10 meter lengths</u>		
	Length 0 m +		A
	Length 10 m +		B
	Length 20 m +		C
	Length 30 m +		D
	Length 40 m +		E
	Length 50 m +		F
	Length 60 m +		G
	Length 70 m +		H
	Length 80 m +		J
	Length 90 m +		K
	<u>1000 meter lengths</u>		
	Length 0 m +		0
	Length 1000 m +		1
	Length 2000 m +		2

1) Attention: For this configuration please append the short-code "N1A" to the order-number.

# Accessories for Communication

Product description                      Variants                      Order No.                      Price in EUR

**Fiber-optical duplex indoor cables**

6 X V 8 1 0 0 - 0 B E □ 1 - □ □ 0

Fiber-optic duplex data line indoor

2 Break-out elements

Fiber type glass 62.5/125um

Halogenfree and flame-retardend

External dimension Ø=2.8x4.5mm orange

Internal dimension Ø=1.7mm orange

number print. For indoor use

(base material I-VHH 2x1xG62.5/125 )

Connector

without

One side with FSMA connector prefabricated

Both sides with FSMA connector prefabricated

Both sides with ST connector prefabricated

With FSMA and ST connector prefabricated

0

1

2

4

5

100 meter lengths

Length 0 m +

Length 100 m +

Length 200 m +

Length 300 m +

Length 400 m +

Length 500 m +

Length 600 m +

Length 700 m +

Length 800 m +

Length 900 m +

0

1

2

3

4

5

6

7

8

9<sup>1)</sup>

10 meter lengths

Length 0 m +

Length 10 m +

Length 20 m +

Length 30 m +

Length 40 m +

Length 50 m +

Length 60 m +

Length 70 m +

Length 80 m +

Length 90 m +

A

B

C

D

E

F

G

H

J

K

1 meter lengths

Length 0 m +

Length 1 m +

Length 2 m +

Length 3 m +

Length 4 m +

Length 5 m +

Length 6 m +

Length 7 m +

Length 8 m +

Length 9 m +

A

B

C

D

E

F

G

H

J

K

1) Attention: For this configuration please append the short-code "N1A" to the order-number.

# Accessories for Communication

Product description                      Variants                      Order No.                      Price in EUR

<b>Fiber-optical duplex outdoor cables with MTRJ-connectors</b>		<b>6 X V 8 1 0 0 - 0 B F</b>	<b>□ 1</b>	-	<b>□ □ A □</b>
Fiber-optic duplex data line outdoor			↑		↑
2 Break-out elements	<u>Connector</u>		2		↑
Fiber type glass 62.5/125um	One side with MTRJ connector, other side				↑
Halogen-free and flame-retardend	with ST connector prepared		3		↑
Nonmetallic rodent protection	Both sides with MTRJ connector prefabricated				↑
External dimension Ø=8.3 mm black					↑
Internal dimension Ø=1.8mm orange					↑
For indoor and outdoor use					↑
(base material AT-VHBH					↑
2G62.5/125 )					↑
	<u>100 meter lengths</u>				0
	Length 0 m +				1
	Length 100 m +				2
	Length 200 m +				3
	Length 300 m +				4
	Length 400 m +				5
	Length 500 m +				6
	Length 600 m +				7
	Length 700 m +				8
	Length 800 m +				9 <sup>1)</sup>
	Length 900 m +				
	<u>10 meter lengths</u>				A
	Length 0 m +				B
	Length 10 m +				C
	Length 20 m +				D
	Length 30 m +				E
	Length 40 m +				F
	Length 50 m +				G
	Length 60 m +				H
	Length 70 m +				J
	Length 80 m +				K
	Length 90 m +				
	<u>1000 meter lengths</u>				0
	Length 0 m +				1
	Length 1000 m +				2
	Length 2000 m +				

1) Attention: For this configuration please append the short-code "N1A" to the order-number.

# Accessories for Communication

Product description                      Variants                      Order No.                      Price in EUR

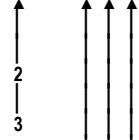
**Fiber-optical duplex indoor cables with MTRJ-connectors**

6 X V 8 1 0 0 - 0 B G □ 1 - □ □ 0

Fiber-optic duplex data line indoor  
 2 Break-out elements  
 Fiber type glass 62.5/125um  
 Halogenfree and flame-retardend  
 External dimension Ø=2.8x4.5mm orange  
 Internal dimension Ø=1.7mm orange  
 Number print, for indoor use  
 ( base material I-VHH 2x1xG62.5/125 )

Connector

One side with MTRJ connector, other side with ST connector prepared  
 Both sides with MTRJ connector prefabricated



100 meter lengths

- Length 0 m +
- Length 100 m +
- Length 200 m +
- Length 300 m +
- Length 400 m +
- Length 500 m +
- Length 600 m +
- Length 700 m +
- Length 800 m +
- Length 900 m +

- 0
- 1
- 2
- 3
- 4
- 5
- 6
- 7
- 8
- 9<sup>1)</sup>

10 meter lengths

- Length 0 m +
- Length 10 m +
- Length 20 m +
- Length 30 m +
- Length 40 m +
- Length 50 m +
- Length 60 m +
- Length 70 m +
- Length 80 m +
- Length 90 m +

- A
- B
- C
- D
- E
- F
- G
- H
- J
- K

1 meter lengths

- Length 0 m +
- Length 1 m +
- Length 2 m +
- Length 3 m +
- Length 4 m +
- Length 5 m +
- Length 6 m +
- Length 7 m +
- Length 8 m +
- Length 9 m +

- A
- B
- C
- D
- E
- F
- G
- H
- J
- K

1) Attention: For this configuration please append the short-code "N1A" to the order-number.