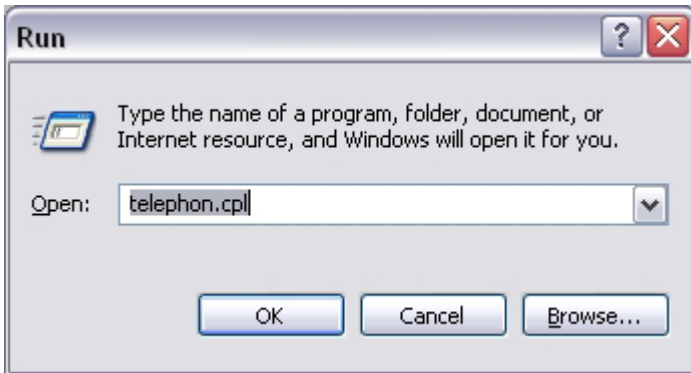


IBS-Tool / Web Monitor (from FW version V4.6x) Installation and Configuration under Windows XP

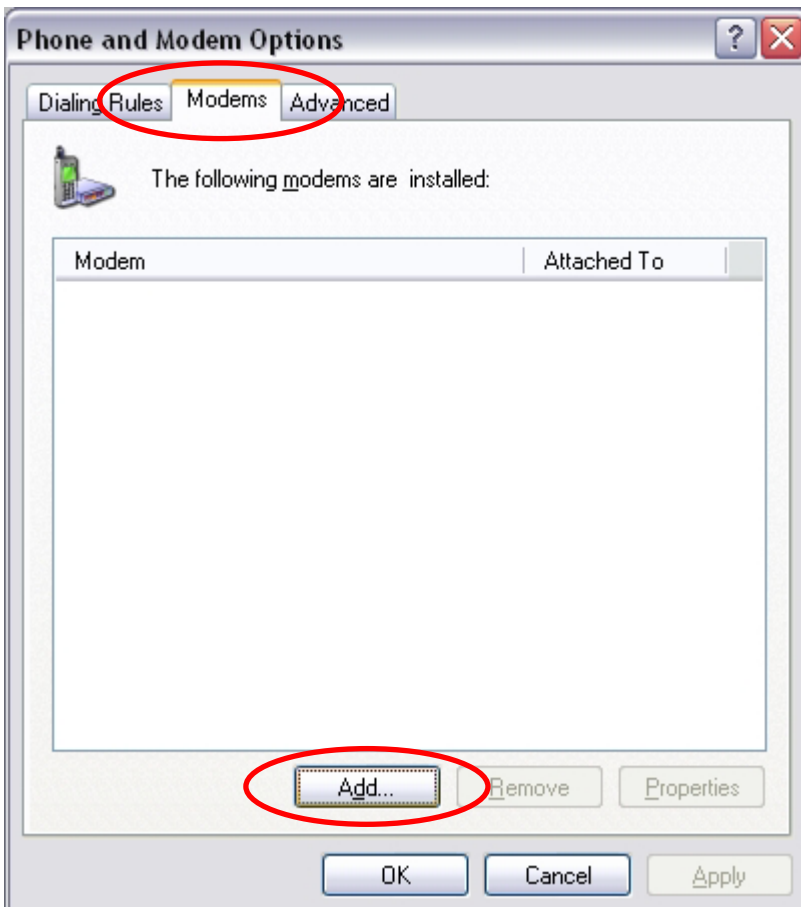
1. Modem installation

All windows are shown with recommended settings and inputs.

Start with: **Taskbar, Start, Run**



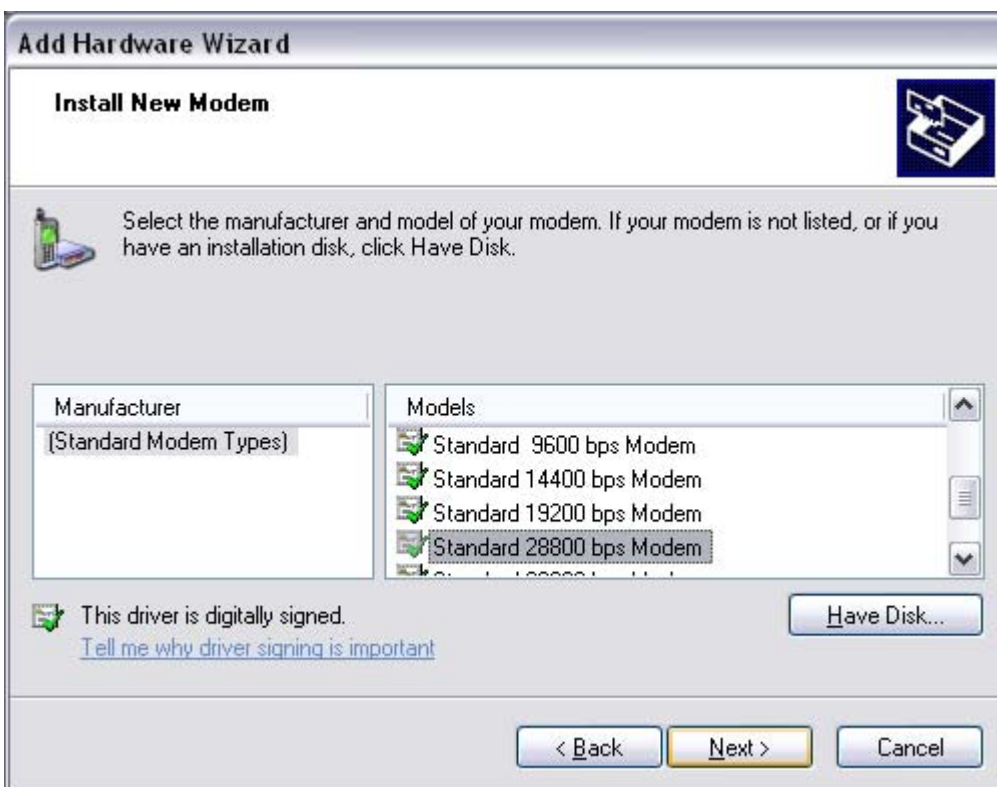
Input: **telephon.cpl**



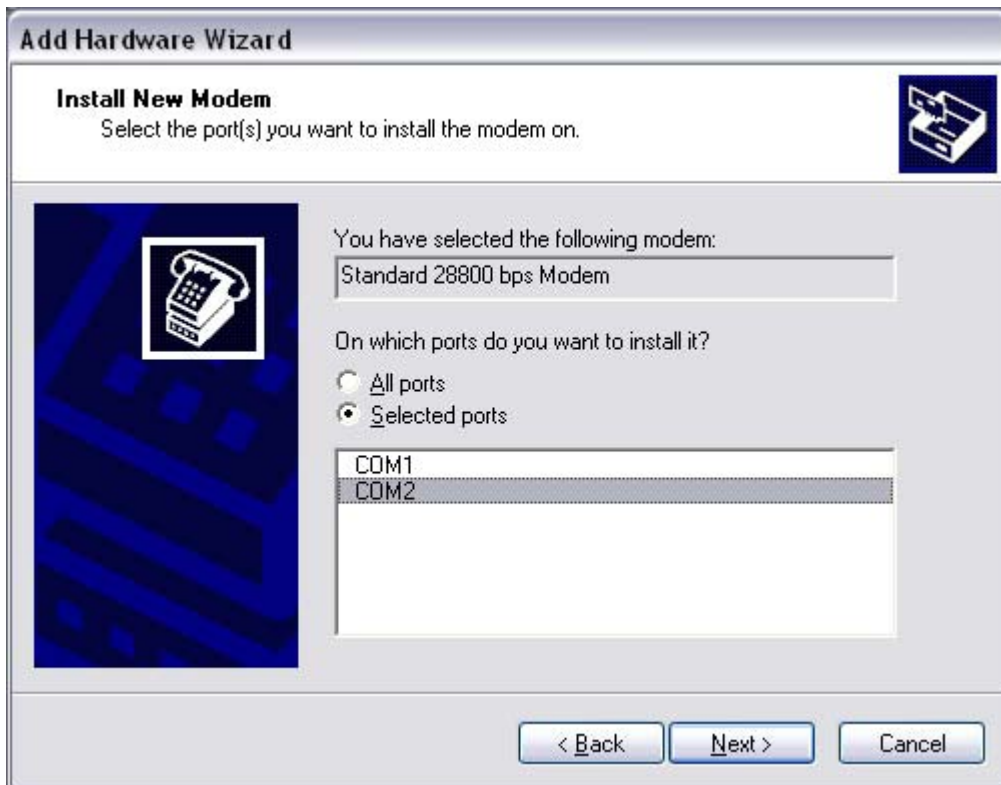
Add !



Although no modem is connected, select: **Don't detect my modem...; Next!**



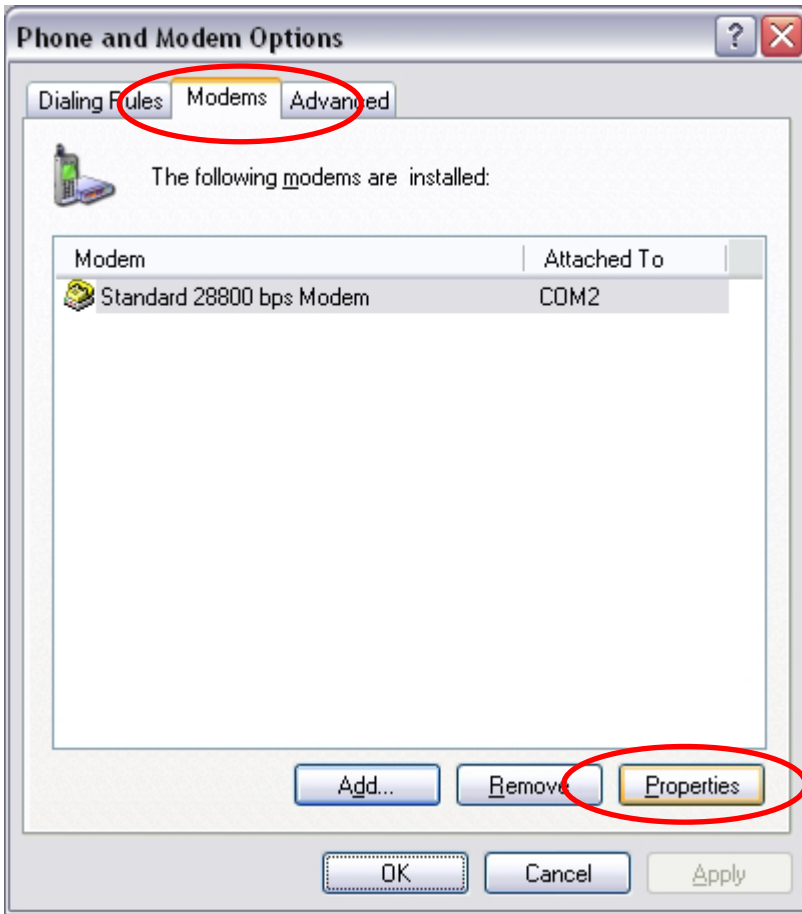
Select: **Standardmodem 28800 bps! Next!**



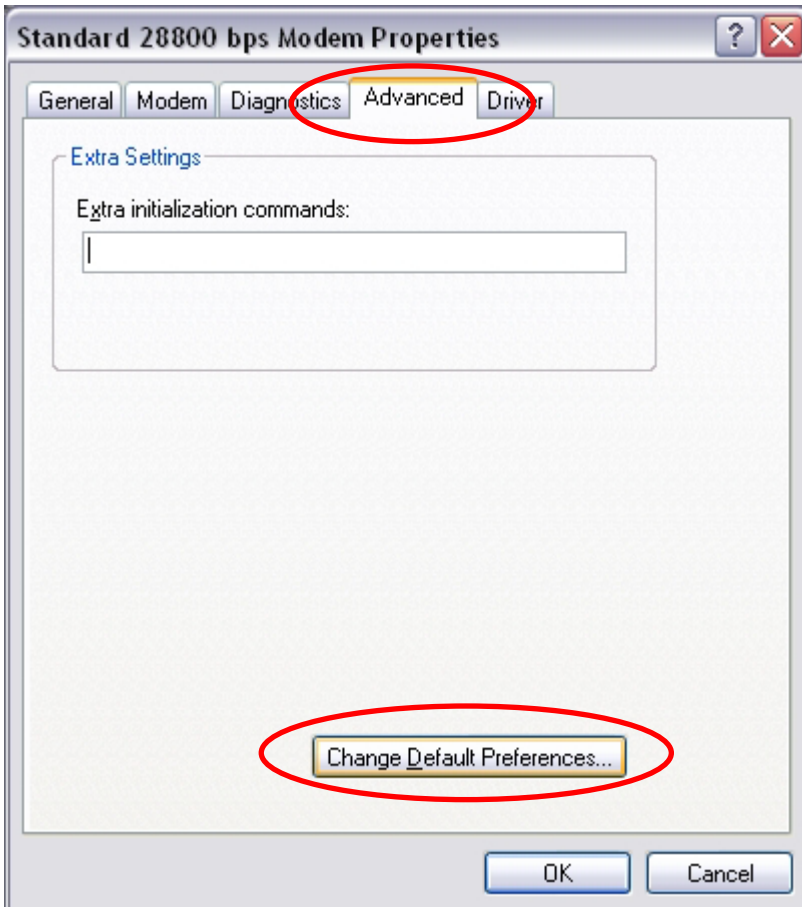
Select port! (Hint: It must not be COM2.) Next!



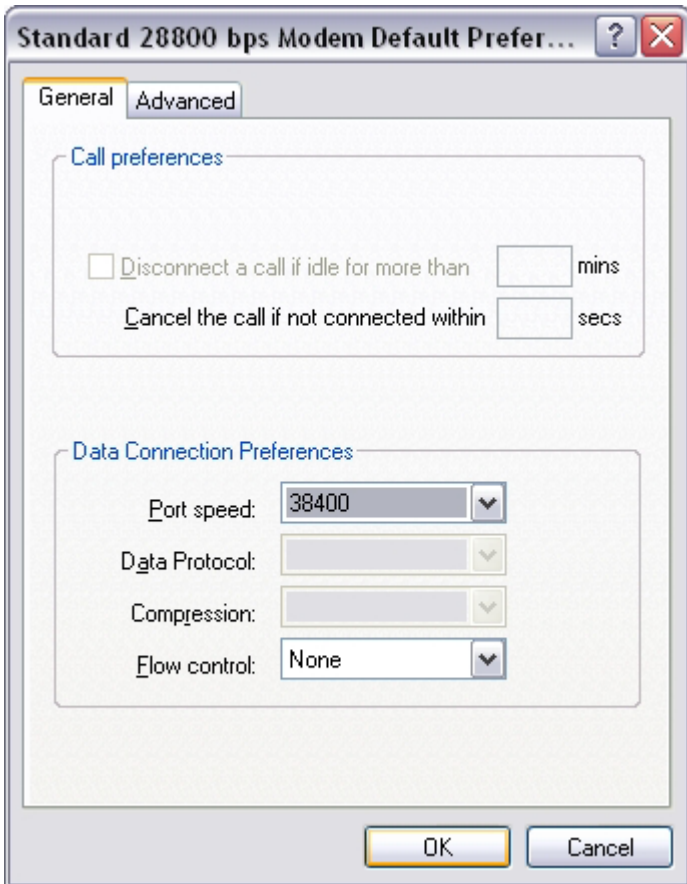
Finish!



Properties!



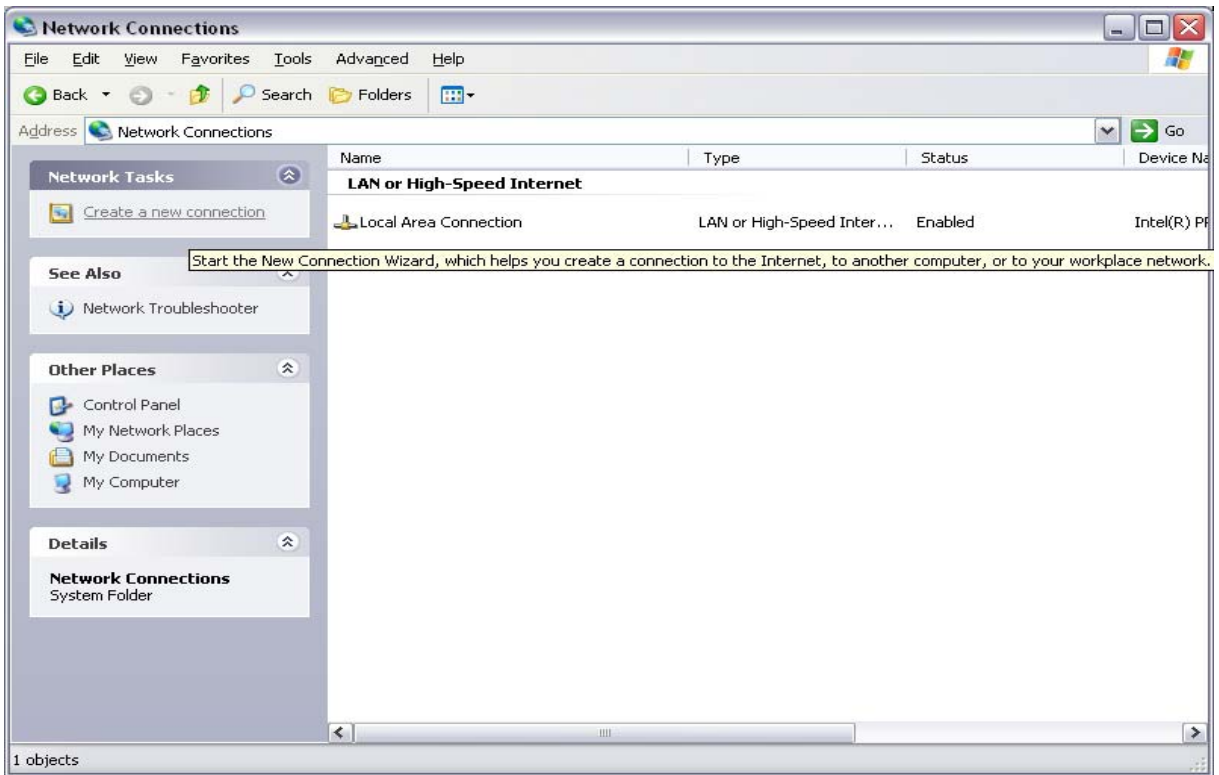
Change Default Preferences!



**Choose same baudrate as with
interface of protection device
(recommended 38400 Bd)
Flow control: None
OK!, OK!, OK!**

2. Configure Network Connection

Start with: **Taskbar, Start, Settings, Control Panel, Network- und Internet Connections, Network Connections**



Create a new connection!



Next!

New Connection Wizard

Network Connection Type
What do you want to do?



- Connect to the Internet**
Connect to the Internet so you can browse the Web and read email.
- Connect to the network at my workplace**
Connect to a business network (using dial-up or VPN) so you can work from home, a field office, or another location.
- Set up an advanced connection**
Connect directly to another computer using your serial, parallel, or infrared port, or set up this computer so that other computers can connect to it.

< Back Next > Cancel

Next!

New Connection Wizard

Getting Ready
The wizard is preparing to set up your Internet connection.



How do you want to connect to the Internet?


- Choose from a list of Internet service providers (ISPs)**
- Set up my connection manually**
For a dial-up connection, you will need your account name, password, and a phone number for your ISP. For a broadband account, you won't need a phone number.
- Use the CD I got from an ISP**

< Back Next > Cancel

Next!

New Connection Wizard

Internet Connection
How do you want to connect to the Internet?




- Connect using a dial-up modem**
This type of connection uses a modem and a regular or ISDN phone line.
- Connect using a broadband connection that requires a user name and password**
This is a high-speed connection using either a DSL or cable modem. Your ISP may refer to this type of connection as PPPoE.
- Connect using a broadband connection that is always on**
This is a high-speed connection using either a cable modem, DSL or LAN connection. It is always active, and doesn't require you to sign in.

< Back Next > Cancel

Next! (If more than one modem is installed, chose the new 28800Bd modem)

New Connection Wizard

Connection Name
What is the name of the service that provides your Internet connection?



Type the name of your ISP in the following box.

ISP Name

IBS_Tool


The name you type here will be the name of the connection you are creating.

< Back Next > Cancel

Type the name, e.g. IBS_Tool; Next!

New Connection Wizard

Phone Number to Dial
What is your ISP's phone number?



Type the phone number below.

Phone number:

You might need to include a "1" or the area code, or both. If you are not sure you need the extra numbers, dial the phone number on your telephone. If you hear a modem sound, the number dialed is correct.

< Back Next > Cancel

„123“ or any other number – any input is necessary; Next!

New Connection Wizard

Connection Availability
You can make the new connection available to any user or only to yourself.



A connection that is created for your use only is saved in your user account and is not available unless you are logged on.

Create this connection for:

Anyone's use

My use only

< Back Next > Cancel

Next!

New Connection Wizard

Internet Account Information
You will need an account name and password to sign in to your Internet account.

Type an ISP account name and password, then write down this information and store it in a safe place. (If you have forgotten an existing account name or password, contact your ISP.)

User name: XYZ

Password: •

Confirm password: •

Use this account name and password when anyone connects to the Internet from this computer

Make this the default Internet connection

Turn on Internet Connection Firewall for this connection

< Back Next > Cancel

**„XYZ“ or any other name – any input is necessary;
Password: x (small X); Next!**

New Connection Wizard

Completing the New Connection Wizard

You have successfully completed the steps needed to create the following connection:

IBS_Tool

- Share with all users of this computer
- Use the same user name & password for everyone

The connection will be saved in the Network Connections folder.

Add a shortcut to this connection to my desktop

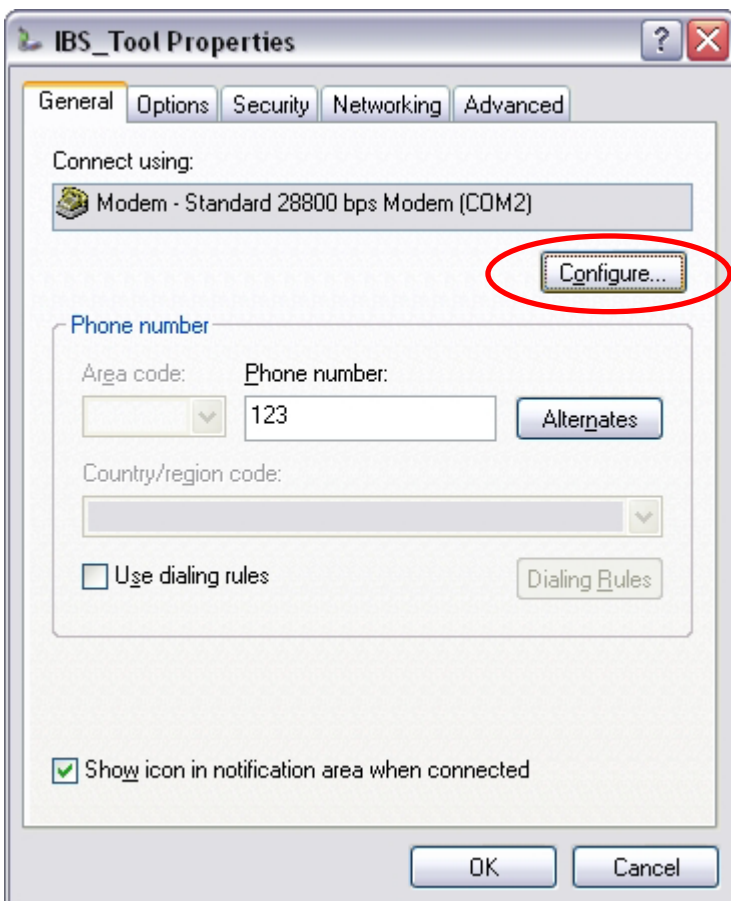
To create the connection and close this wizard, click Finish.

< Back Finish Cancel

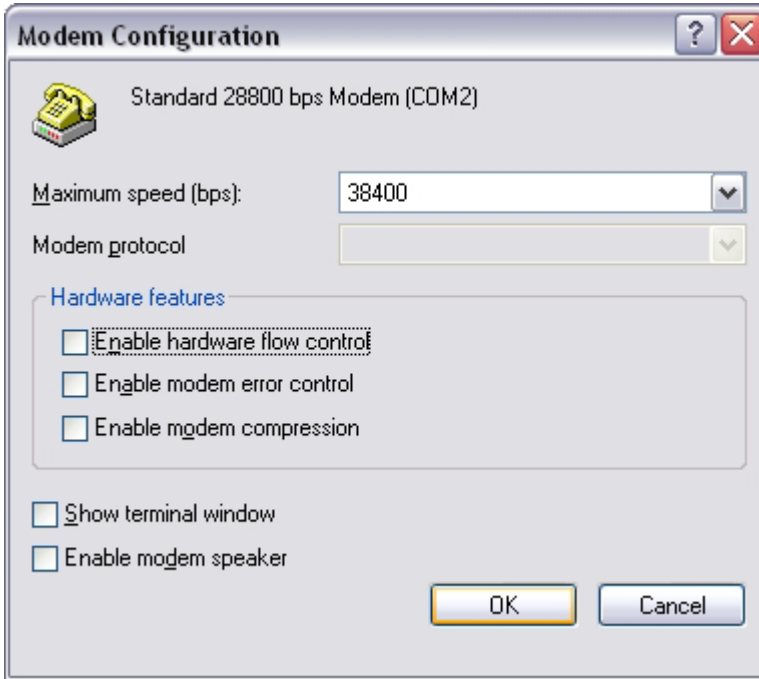
Finish!



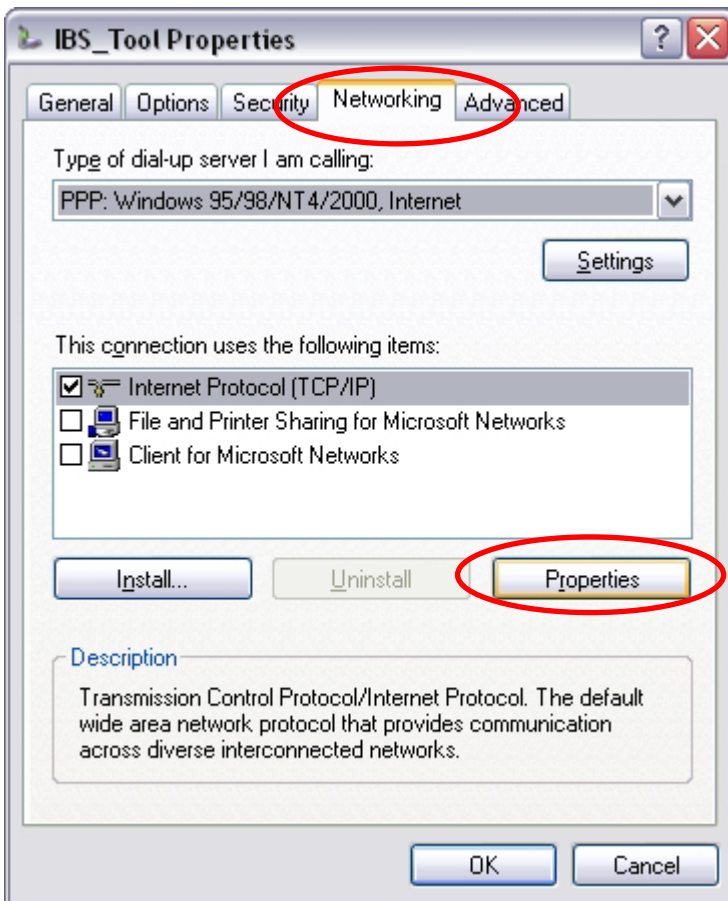
Properties!



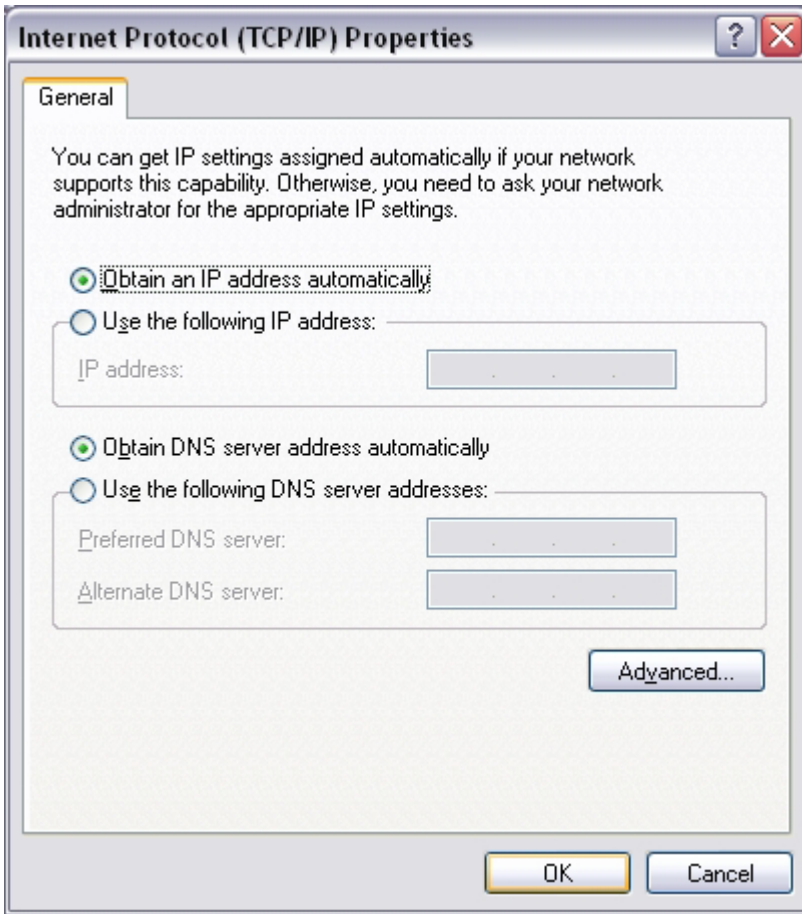
**Mark „Show icon in notification area...“
(it will be needed later)
Configure...!**



**Choose same baudrate as with interface of protection device and modem (recommended 38400 Bd)
Disable hardware flow control
OK!**



**Networking, Internet Protocol (TCP/IP),
Properties!**



OK! OK!



Establish connection with protection device! (use Digsi-cable)

FW version beyond V4.6

Dial!

from FW version V4.6

Device has web monitor instead of IBS-Tool

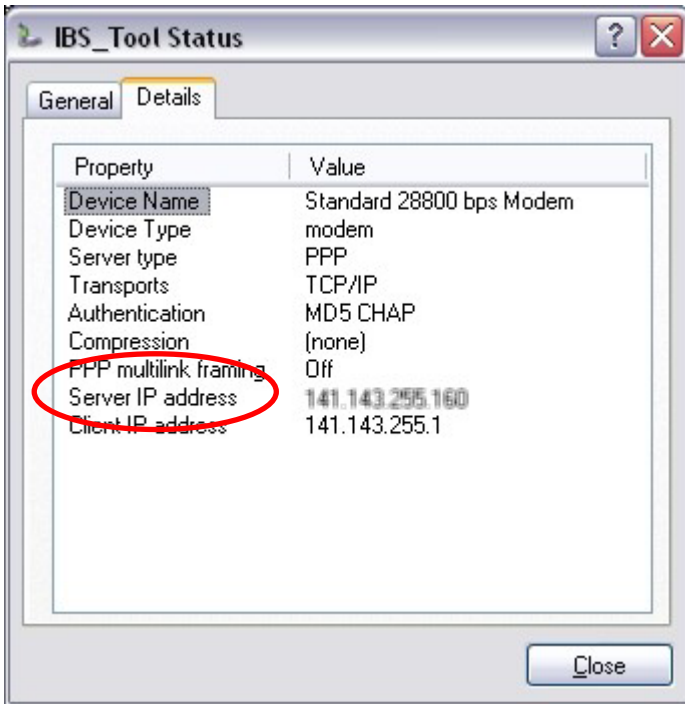
Different passwords are possible:

Reading: 000000

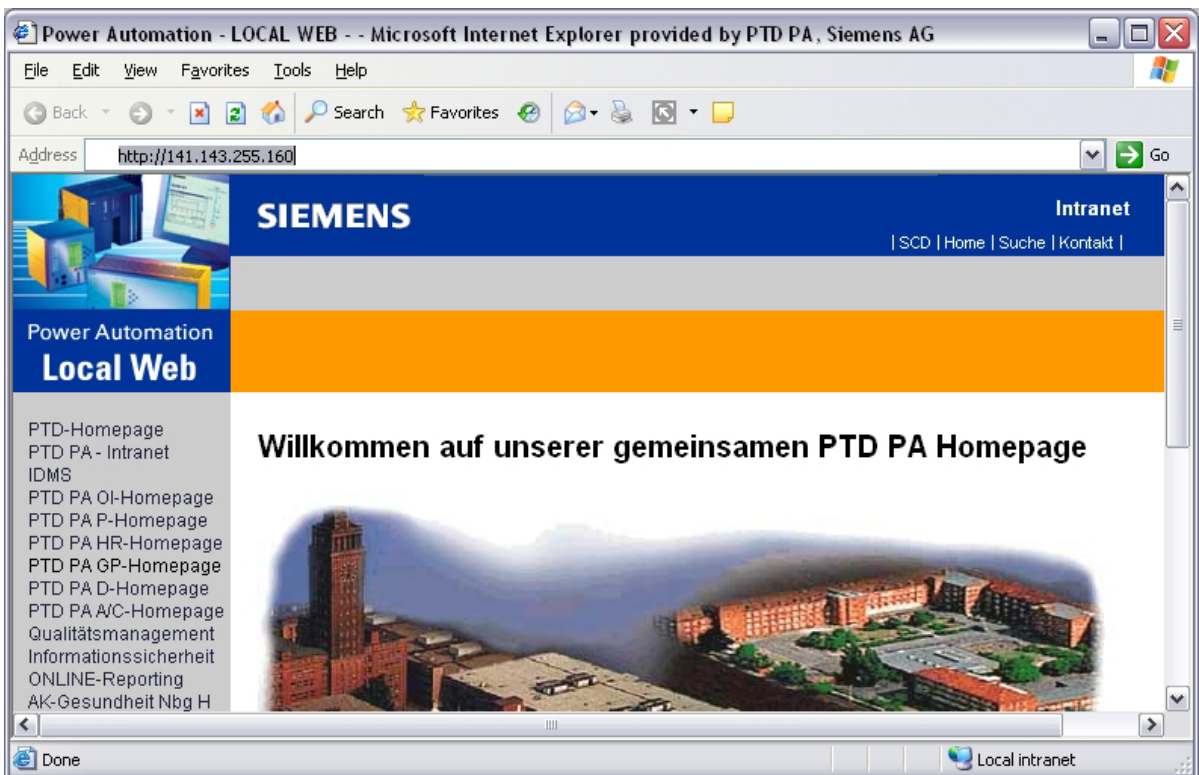
Changing: 000001

Full access: 000002

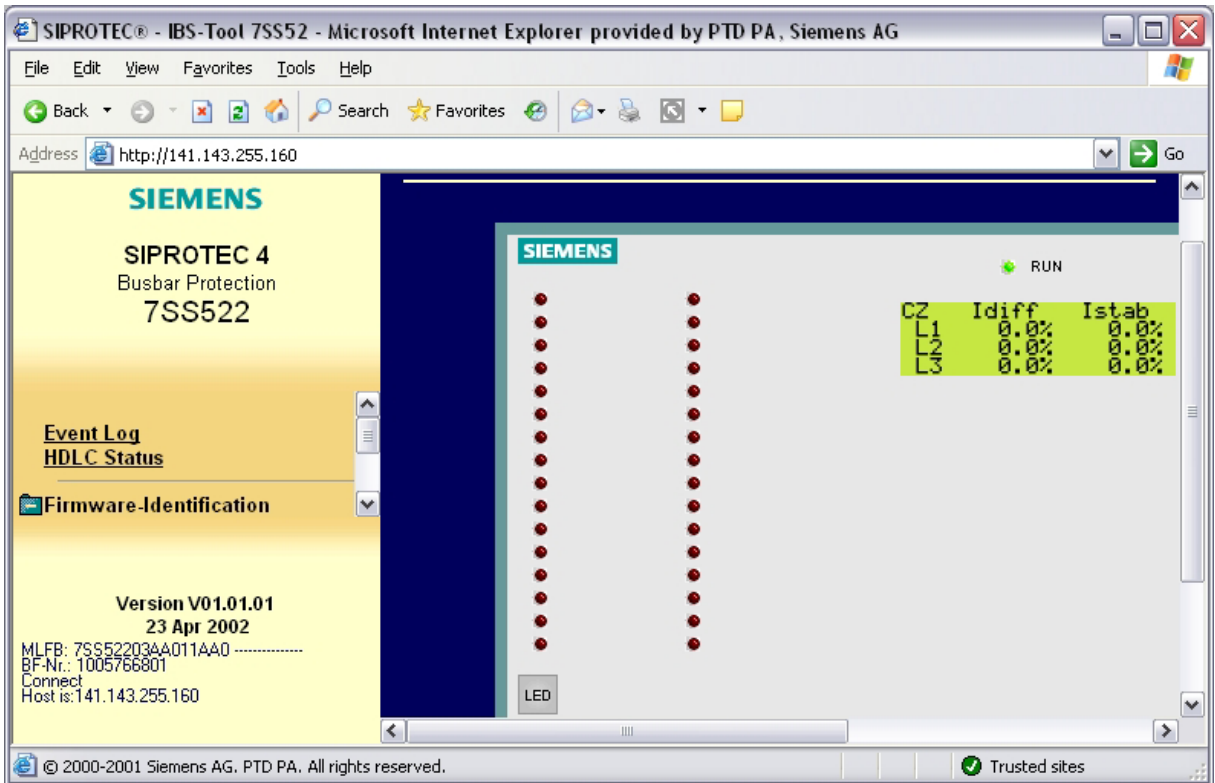
Password input, then dial!



Click with right mouse button on „Show icon in notification area when connected“,
Open Details,
Read out Server IP address, remember it!

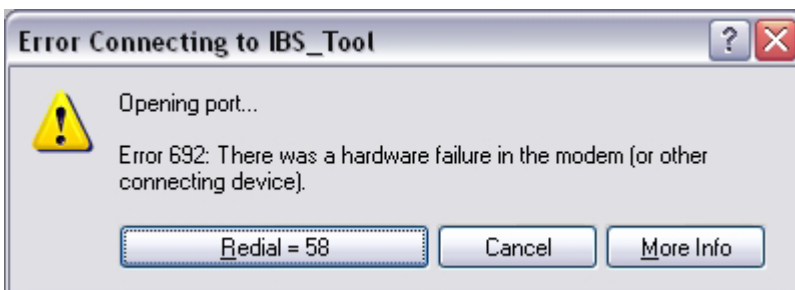


Start Browser, enter the IP adresse, Enter!



Good luck!
 With best regards
 Siemens AG Nürnberg,
 PTD EA 13

In the event of this error message :



there are three possible reasons:

1. The baud rate must be identical in **three** positions: **modem configuration**, configuration of the **dial up connection** and in the **interface of the protection device**.
2. Did you really enter a **small x** or a **password for web monitor**? Enter password prior to establishing the connection to be on save side.
3. If the browser doesn't show the IBS-Tool, check the IP address! Sometimes the Internet Explorer stumbles. As a remedy boot PC again !