

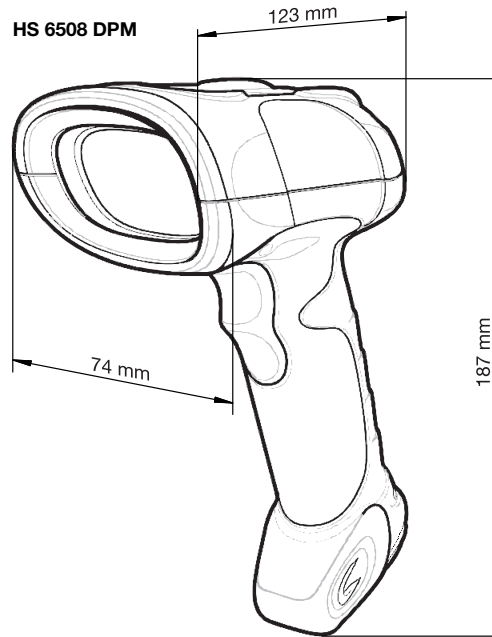
HS 6508 DPM

DPM hand-held scanner

en 01-2013/03 50121035



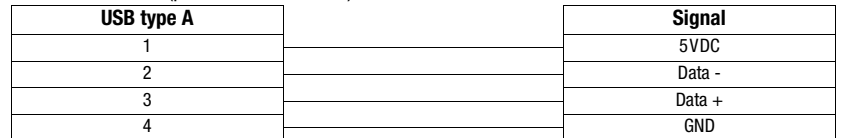
Dimensioned drawing



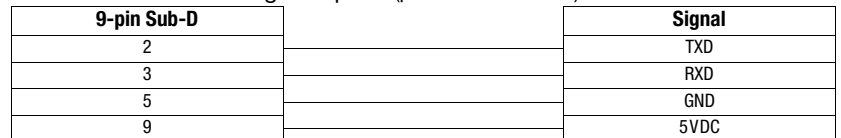
- Hand-held scanner for directly-marked codes (needle print or laser marking on flat surfaces)
- Very sturdy, ergonomic housing
- Robust trigger button
- Built-in decoder
- Display for successful reading with LED, signal tone and vibration
- RS 232, PS/2 or USB interface
- Operating temperature from -20 to +50 °C
- Protection class IP 65

Electrical connection

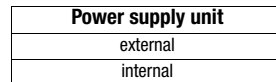
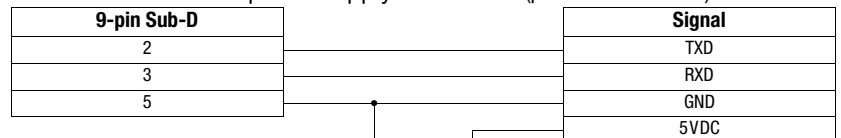
for USB cable (part no. 50120432)



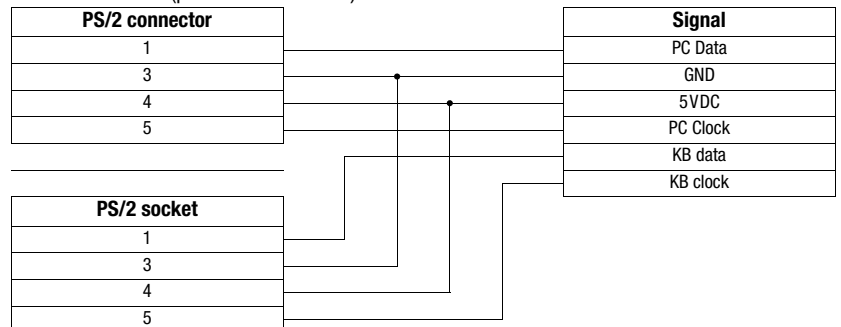
for RS 232 cable - voltage via pin 9 (part no. 50120436)



for RS 232 cable with power supply connection (part no. 50120434)



for PS/2 cable (part no. 50120438)



Accessories

(available separately)

- **RS 232 cable - voltage via pin 9**
Part no. 50120436
- **RS 232 cable with power supply connection**
Part no. 50120434
- **Power supply unit (100 ... 240VAC)**
Part no. 50120428
- **USB cable**
Part no. 50120432
- **PS/2 cable**
Part no. 50120438
- **Wall mount**
Part no. 50120444

We reserve the right to make changes • DS_HS6508DPM_en_50121035.fm

Technical Data

Electrical data

Operating voltage U_B 5VDC \pm 10%
 Current consumption 330mA

Interfaces

Interface types RS 232, PS/2 and USB
 Trigger via button

Types of codes

Bar codes 2/5 Interleaved, Code 39, Code 128, Code 93, Codabar, UPC/
 EAN, GS1 Databar
 2D-codes Data Matrix codes ECC 200, Aztec, PDF417, MicroPDF, QR Code

Optical data

Optical system CMOS imager 752x480
 Light source alignment aid: 650nm laser diode, IEC class 2 (EN/IEC 60825-1)
 illumination element: 630nm LED
 Reading distance 21 ... 157mm (UPC/EAN 13, 100% or 0.33mm)

Mechanical data

Weight 336g (without cable)
 Dimensions 187x74x123mm

Environmental data

Ambient temp. (operation/storage) -20°C ... +50°C / -40°C ... +60°C
 Relative humidity 5 ... 95% (non-condensing)
 Protection class IP 65
 Shock resistance can withstand multiple falls onto a concrete floor from a height of 2m

Remarks

Robust 2D-code hand-held scanner with integrated decoder for directly marked codes (DPM). These codes may be dot-peened or printed. Laser-etched codes on flat surfaces can also be detected.

Data transmission during keyboard-wedge operation via USB or PS/2 interface, or serial communication via RS 232 and USB interface.

For a functional unit, a hand-held scanner and corresponding cable and, if using the RS 232 on a PC, a power supply unit must be ordered.

Read field

Code type	Module size [mil]	Module size [mm]	From [mm]	To [mm]
Code 39	3	0.076	27.9	40.6
	5	0.127	0	88.9
	7.5	0.191	0	137.2
	20	0.508	27.9	233.7
UPC/EAN 13	13 (100%)	0.330	20.3	157.5
PDF 417	6.67	0.169	0	94.0
	10	0.254	0	114.3
	15	0.381	0	142.2
Data Matrix Code	4	0.102	25.4	53.3
	5	0.127	10.2	68.6
	7.5	0.191	0	88.9
	10	0.254	0	111.8
QR Code	4	0.102	27.9	35.6
	5	0.127	12.7	55.9
	7.5	0.191	0	83.8
	10	0.254	0	101.6

Notice:

Please notice that the real reading distances are also influenced by factors such as labeling material, printing quality, scanning angle, printing contrast etc., and may thus deviate from the reading distances specified here.



Additional information on the product and on configuring (code type release, number of digits, etc.) can be found in the operating instructions (Product Reference Guide). Download at www.leuze.com.

Order guide

		Part no.
HS 6508 DPM	DPM hand-held scanner with RS 232, PS/2 and USB interface	50120442

HS 6508 DPM

DPM hand-held scanner



Attention Laser Radiation!

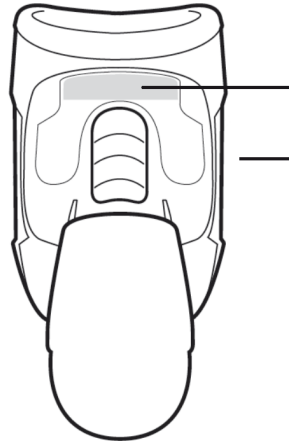
Satisfies directives 21 CFR 1040.10 and 1040.11 (with exception of the deviations listed in Laser Notice No. 50 from 24 June 2007) as well as the requirements given in EN 60825-1:2007 and IEC 60825-1 (Ed. 2).

The laser classification is specified in a sticker on the device.

According to US and international regulations, the following warning must be shown:

Caution: Use of operational controls, adjustments or performance of procedures other than those specified herein may result in hazardous laser light exposure. Class 2 laser scanners use a low power, visible light diode. As with any very bright light source, such as the sun, the user should avoid staring directly into the light beam. Momentary exposure to a class 2 laser is not known to be harmful.

CAUTION-CLASS 2 LASER LIGHT WHEN OPEN. DO NOT STARE INTO THE BEAM. ATTENTION- LUMIÈRE LASER EN CAS D'OUVERTURE. NE PAS REGARDER DANS LE FAISCEAU. VORSICHT- LASERLICHT KLASSE 2, WENN ABDECKUNG GEÖFFNET. NICHT IN DEN STRAHL BLICKEN.
注意：打开时及联锁失效时有激光辐射 勿直视光束



LASER LIGHT- DO NOT STARE INTO BEAM.
CLASS 2 LASER PRODUCT. LASERLICHT - NICHT IN DEN STRAHL BLICKEN. LASER KLASSE 2.
LUMIÈRE LASER - NE PAS REGARDER DANS LE FAISCEAU.
APPAREIL À LASER DE CLASSE 2 630-680nm, 1mW
激光辐射 勿直视光束 2类激光产品



COMPLIES WITH 21 CFR1040.10 AND 1040.11 EXCEPT FOR DEVIATIONS PURSUANT TO LASER NOTICE No. 50, DATED JUNE 24, 2007, AND EN60825-1:2007 AND IEC 60825-1(ED.2).

HS 6508 DPM on serial PC interface

Required parts:

1x	50120442	HS 6508 DPM
1x	50120434	KB RS232-2 HS 65x8
1x	50120428	NT HS6508



Scanning the adjacent bar code sets the following interface parameters:

RS 232 at 9600 baud, 8 data bits, 1 stop bit, no parity, no prefix, no postfix

STANDARD RS-232

Configuration for the RS 232 Leuze standard protocol

Scanning the adjacent 2D-code sets the following interface parameters for the Leuze standard protocol:

**RS 232 at 9600 baud, 8 data bits, 1 stop bit, no parity, prefix STX and postfixes <CR><LF>;
Code 2/5 Interleaved with 10 places**



HS 6508 DPM on MA 2xxi

Required parts:

1x	50120442	HS 6508 DPM
1x	50120436	KB RS232-1 HS 65x8
1x	50113397	KB JST-HS-300
1x	50112893	MA 204i Profibus gateway, or
	50112892	MA 208i Ethernet gateway, or
	50112891	MA 248i Profinet gateway

Scanning the adjacent 2D-code sets the following interface parameters for communication with the MA 2xxi gateway:

**RS 232 transmission at 9600 baud, 8 data bits, 1 stop bit, no parity, postfixes <CR><LF>;
Code 2/5 Interleaved with 10 places**



HS 6508 DPM on MA 21

Required parts:

1x 50120442 HS 6508 DPM
 1x 50120436 KB RS232-1 HS 65x8
 1x 50035421 KB 021 Z
 1x 50030481 MA 21 100

Scanning the adjacent 2D-code sets the following interface parameters for communication with the MA 21 connector unit:

RS 232 transmission at 9600 baud, 7 data bits, 1 stop bit, even parity, postfixes <CR><LF>; Code 2/5 Interleaved with 10 places

Pin assignments KB 021 Z

Core color:	Signal	Terminal in the MA 21:
brown	RXD	26
white	TXD	27
blue	GND	28
red	VCC	30
black	GND	31
bare (shield)	PE	21



HS 6508 DPM on PS/2 interface

Required parts:

1x 50120442 HS 6508 DPM
 1x 50120438 KB PS2-1 HS 65x8

Scanning the adjacent 2D-code sets the following interface parameters for communication via the PS/2 interface:

German PS/2 keyboard with <CR><LF>; Code 2/5 Interleaved with 10 places



HS 6508 DPM on USB interface (keyboard emulation)

With this operating mode, a PC keyboard is emulated (Keyboard Wedge mode via USB). The read data are written directly into the currently activated program. The data can thereby be further processed in all standard programs.

Required parts:

1x 50120442 HS 6508 DPM
 1x 50120432 KB USB-1 HS 65x8

Scanning the adjacent 2D-code sets the following interface parameters for keyboard emulation via USB interface:

German USB keyboard emulation with <CR><LF>; Code 2/5 Interleaved with 10 places



HS 6508 on USB interface (COM port emulation)

With this operating mode, a COM interface is emulated (COM port emulation via USB). The read data are sent to a new COM interface and can be further processed by programs that expect data via COM interfaces. The drivers with which this COM interface is emulated can be downloaded at www.leuze.com.

Required parts:

1x 50120442 HS 6508 DPM
 1x 50120432 KB USB-1 HS 65x8

Procedure:

1. Plug the HS 6508 DPM hand-held scanner into a free USB port. The scanner acknowledges this with a tone sequence.
2. Scan the code shown below.
3. Install the USB serial driver **usbcdc.inf** when you are prompted to do so by Windows.
4. Open a terminal program or your program for the serial interface and select the new COM port.



COM port emulation on the next free
 COM address with CR/LF as postfix.