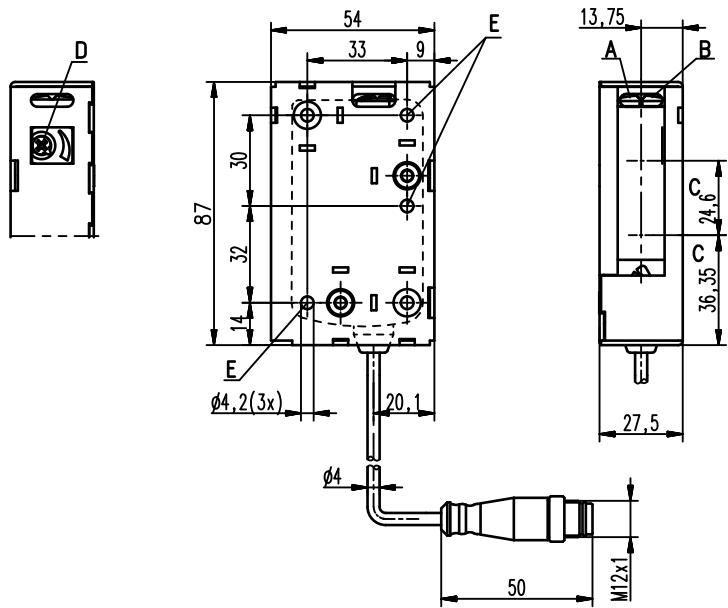


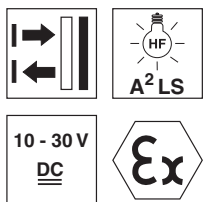
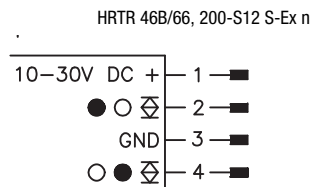
HRTR 46B Ex n Diffuse reflection light scanner with background suppression

Dimensioned drawing



- A** Green indicator diode
- B** Yellow indicator diode
- C** Optical axis
- D** Scanning range adjustment
- E** Fastening hole

Electrical connection



5 ... 1,800mm
800mm with
black-white error < 10%

- Adjustable scanner with background suppression
- Reliable detection of light and dark, as well as inclined or sloped surfaces
- Exact scanning range adjustment through multiturn potentiometer
- Fast alignment through *brightVision*®
- Fast connection through Ultra-Lock™ fast locking
- A²LS - Active Ambient Light Suppression
- Complementary switching outputs for optimal adaptation to the application
- Ex II 3G Ex nA op is IIB T4 Gc X
- Ex II 3D Ex tc IIIC T90°C Dc IP67 X



Accessories:

- (available separately)
- Mounting systems (BT 46, BT 46.1, BT 46.1.5, BT 46.2)
 - M12 connectors (KD ...)
 - Ready-made cables (K-D ...)
 - Interlocking guard K-VM12-Ex (Part no. 501 09217)

en 03-2013/05 50109198-01

We reserve the right to make changes • DS_HRTR46BEx_en_50109198-01.fm

Specifications

Optical data

Typ. scanning range limit (white 90%) ¹⁾	5 ... 1,800mm
Scanning range ²⁾	see tables
Adjustment range	120 ... 1,800mm
Light source	LED (modulated light)
Wavelength	620nm (visible red light)

Timing

Switching frequency	200Hz
Response time	2.5ms
Delay before start-up	≤ 100ms

Electrical data

Operating voltage U_B ³⁾	10 ... 30VDC (incl. residual ripple)
Residual ripple	≤ 15% of U_B
Open-circuit current	≤ 20mA
Switching output	.../66. ... 2 push-pull switching outputs ⁴⁾
	pin 2: PNP dark switching, NPN light switching
	pin 4: PNP light switching, NPN dark switching
	.../4. ... PNP switching output
	pin 4: PNP light switching
	.../4D. ... PNP switching output
	pin 4: PNP dark switching
Signal voltage high/low	≥ ($U_B - 2V$) ≤ 2V
Output current	max. 100mA

Indicators

Green LED	ready
Yellow LED	reflection
Yellow LED, flashing	reflection, no performance reserve

Mechanical data

Housing ⁵⁾	Plastic
Optics cover	Plastic
Weight	50g (with connector) / 65g (with cable and conn.)
Connection type	cable with M12 connector, cable length: 200mm

Environmental data

Ambient temp. (operation/storage)	-30°C ... +60°C / -40°C ... +70°C
Protective circuit ⁶⁾	2, 3
VDE safety class ⁷⁾	II, all-insulated
Protection class	IP 67, IP 69K
LED class	1 (in accordance with EN 60825-1)
Standards applied	IEC 60947-5-2

Explosion protection

Certification (CENELEC)	II 3G Ex nA op is IIB T4 Gc X
	II 3D Ex tc IIIC T90°C Dc IP67 X

- 1) Typ. scan. range limit: max. achievable scanning range for light objects (white 90%)
- 2) Scanning range: recommended scanning range for objects with different diffuse reflection
- 3) For UL applications: for use in class 2 circuits only
- 4) The push-pull switching outputs must not be connected in parallel
- 5) Model "S"=standard housing, model "W"= with lateral flange
- 6) 2=polarity reversal protection, 3=short circuit protection for all outputs
- 7) Rating voltage 50VAC

Order guide

Cable with M12 connector, length: 200mm	Designation	Part no.
Complementary push-pull switching output		
Housing model S (standard)	HRTR 46B/66, 200-S12 S-Ex n	501 08589

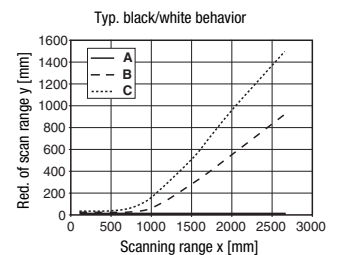
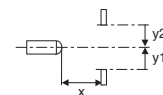
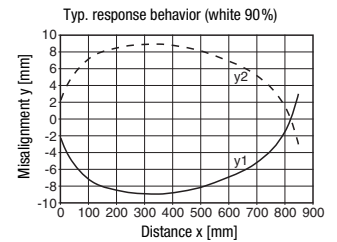
Tables

1	0	1,800
2	15	1,000
3	20	700

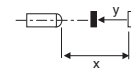
1	white 90%
2	gray 18%
3	black 6%

Scanning range [mm]

Diagrams



- A white 90%
- B gray 18%
- C black 6%



Remarks

- **Approved purpose:**
This product may only be used by qualified personnel and must only be used for the approved purpose. This sensor is not a safety sensor and is not to be used for the protection of persons.
- With the set scanning range, a tolerance of the upper scanning range limit is possible depending on the reflection properties of the material surface.

Ex devices

Notices for the safe use of sensors in potentially explosive areas

This document is valid for devices with the following classifications:

Device group	Device category	Equipment protection level	Zone
II	3G	Gc	Zone 2
II	3D	Dc	Zone 22



Attention!

- Check whether the equipment classification corresponds to the requirements of the application.
- The devices are not suited for the protection of persons and may not be used for emergency shutdown purposes.
- A safe operation is only possible if the equipment is used properly and for its intended purpose.
- Electrical equipment may endanger humans and (where applicable) animal health, and may threaten the safety of goods if used incorrectly or under unfavorable conditions in potentially explosive areas.
- The applicable national regulations (e.g. EN 60079-14) for the configuration and installation of explosion-proof systems must be observed without fail.

Installation and Commissioning

- The devices must only be installed and commissioned by trained electricians. They must be aware of the regulations and operation of explosion-proof equipment.
- To prevent unintentional separation under voltage, devices with connector (e.g. Series 46B) must be equipped with a safeguard or a mechanical interlocking guard (e.g. K-VM12-Ex, part no. 50109217). The warning sign "Do not disconnect under voltage" that is supplied with the device must be attached to the sensor or its mounting bracket so that it is clearly visible.
- Devices with terminal compartment lid (e.g. Series 96) must only be commissioned if the terminal compartment lid of the device is properly sealed.
- Connection cables and connectors must be protected from excessive or unintended pulling or pushing strain.
- Prevent dust deposits from forming on the devices.
- Metallic parts (e.g. housing, mounting devices) are to be integrated into the potential equalization to prevent electrostatic charge.

Maintenance

- No changes may be made to explosion-proof devices.
- Repairs may only be performed by a person trained for such work or by the manufacturer.
- Defective devices must be replaced immediately.
- Cyclical maintenance is generally not necessary.
- Depending on the environmental conditions, it may occasionally be necessary to clean the optical surfaces of the sensors. This cleaning must only be performed by persons trained for this task. We recommend using a soft, damp cloth. Cleaning agents that contain solvents must not be used.

Chemical resistance

- The sensors demonstrate good resistance against diluted (weak) acids and bases.
- Exposure to organic solvents is possible only under certain circumstances and only for short periods of time.
- Resistance to chemicals must be examined on a case by case basis.

Special conditions

- The devices must be installed in such a way that they are protected from direct exposure to UV rays (sunlight).
- Static charge on plastic surfaces must be avoided.

**EG-KONFORMITÄTS-
ERKLÄRUNG****EC DECLARATION
OF CONFORMITY****DECLARATION CE
DE CONFORMITE**

Der Hersteller

The Manufacturer

Le constructeur

**Leuze electronic GmbH + Co. KG
In der Braike 1, PO Box 1111
73277 Owen, Germany**

erklärt, dass die nachfolgend
aufgeführten Produkte den
einschlägigen Anforderungen
der genannten EG-Richtlinien
und Normen entsprechen.

declares that the following
listed products fulfil the
relevant provisions of the
mentioned EC Directives and
standards.

déclare que les produits
identifiés suivants sont
conformes aux directives CE
et normes mentionnées.

Produktbeschreibung:

Description of product:

Description de produit:

**Reflexions-Lichttaster mit
Hintergrundausbldung
(I)HRT(R) 46B/...S-Ex n****Diffuse reflection light scanner
with background suppression
(I)HRT(R) 46B/... S-Ex n****Cellule reflea à détection
directe avec élimination de
l'arrière-plan
(I)HRT(R) 46B/... S-Ex n**

Kennzeichnung Gas / Staub:

Marking for gas / dust:

Marquage gaz / poussière:

 II 3G Ex nA op is IIB T4 Gc X II 3D Ex tc IIIC T90° C Dc IP67 X

Angewandte EG-Richtlinie(n):

Applied EC Directive(s):

Directive(s) CE appliquées:

**94/9/EG
2004/108/EG****94/9/EC
2004/108/EC****94/9/CE
2004/108/CE**

Angewandte Normen:

Applied standards:

Normes appliquées:

**EN 60079-0: 2009
EN 60079-28: 2007
EN 60947-5-2: 2007****EN 60079-15: 2005
EN 60079-31: 2009****22.3.2010**

Datum / Date / Date


Ulrich Balbach, Geschäftsführer / Director / Directeur