



Model Number

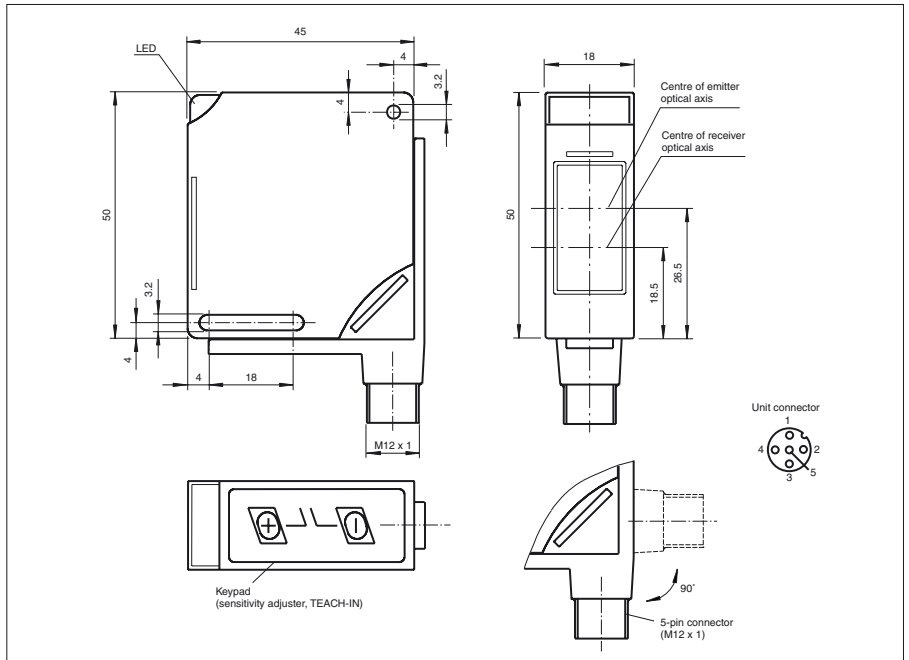
MLV11-54-E-LAS/47/112

Retroreflective sensor
with 4-pin or 5-pin M12 connector, 90°
adjustable position

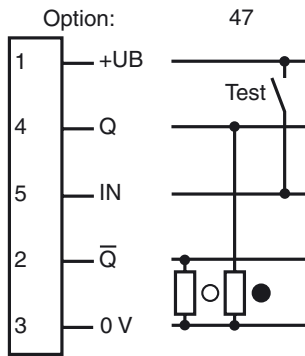
Features

- Visible red light, pulsed LASER light
- Automatic adjustment of sensitivity per TEACH-IN
- Parameterization via optical communication link (e.g. optional time increments)
- Protection degree IP68
- Multifunction input
- Boost Mode - approx. 4 times the brightness of the transmitted light as an adjustment aid

Dimensions



Electrical connection



○ = Light on
● = Dark on

Release date: 2004-11-24 11:56 Date of issue: 2011-01-04 421591_ENG.xml

Technical data**General specifications**

Effective detection range	0 ... 15 m
Reflector distance	300 ... 15000 mm
Reference target	H60 reflector
Light source	laser diode
Light type	670 nm red light pulsed LASER-light (12 μ s), 2 mW peak power, laser class 2, eye-safe
Approvals	CE
Laser class	2
Diameter of the light spot	50 mm at a distance of 15 m
Ambient light limit	10000 Lux

Indicators/operating means

Operating display	LED green
Function display	Teach-In: LED green flashing switching state: LED yellow pre-fault indicator: LED red flashing
Controls	membrane keys for setting sensitivity and Teach-In

Electrical specifications

Operating voltage	U_B	10 ... 30 V DC
Ripple		10 %
No-load supply current	I_0	≤ 25 mA
Time delay before availability	t_v	≤ 50 ms

Input

Test input	inactive: ≤ 3 V or unwired; active: ≥ 7 V
------------	---

Output

Output of the pre-fault indication	PNP, dynamic/static configurable	
Switching type	light/dark on	
Signal output	2 switch outputs PNP, programmable as - NO/NC (complementary) - NO and pre-fault indication - NC and pre-fault indication	
Switching voltage	max. 30 V DC	
Switching current	max. 200 mA	
Voltage drop	U_d	≤ 2.5 V
Switching frequency	f	≤ 1000 Hz
Response time		≤ 0.5 ms
Timer function	programmable	

Standard conformity

Standards	EN 60947-5-2
-----------	--------------

Ambient conditions

Ambient temperature	-25 ... 70 °C (-13 ... 158 °F)
Storage temperature	-40 ... 70 °C (-40 ... 158 °F)

Mechanical specifications

Protection degree	IP68
Connection	5-pin M12 x 1 connector, 90° adjustable
Material	
Housing	PBT
Optical face	scratch resistant plastic lens
Mass	60 g

